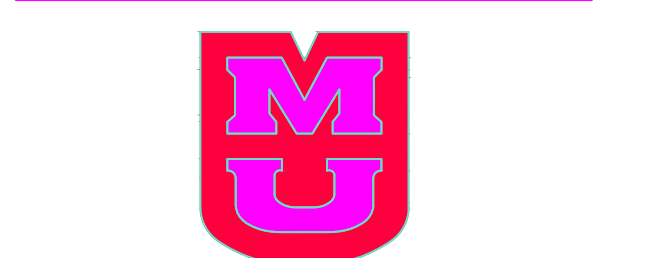


INTERNATIONAL ARCHITECTS ATELIER



912 BROADWAY SUITE 300, K.C., MO. 64105  
 PH: 816.471.6522 FX: 816.471.3755

MEP CONSULTANT  
 W.L. CASSELL & ASSOCIATES, INC.  
 106 WEST 11TH STREET, SUITE 1400  
 KANSAS CITY, MO. 64108  
 PH. 816.842.8437 FX. 816.842.6441

STRUCTURAL CONSULTANT  
 STRUCTURAL ENGINEERING ASSOCIATES  
 1000 WALNUT, SUITE 1570  
 KANSAS CITY, MO. 64112  
 PH. 816.421.1042 FX. 816.421.1061

CODE CONSULTANT  
 FP & C CONSULTANTS, INC.  
 ONE WARD PARKWAY, SUITE 200  
 KANSAS CITY, MO. 64112  
 PH. 816.931.3377 FX. 816.931.3378

HATCH HALL  
 RENOVATE  
 RESIDENCE HALL



PROJECT NO. 400641

DATE: April 28, 2008  
 PROJ. NO.: 400641

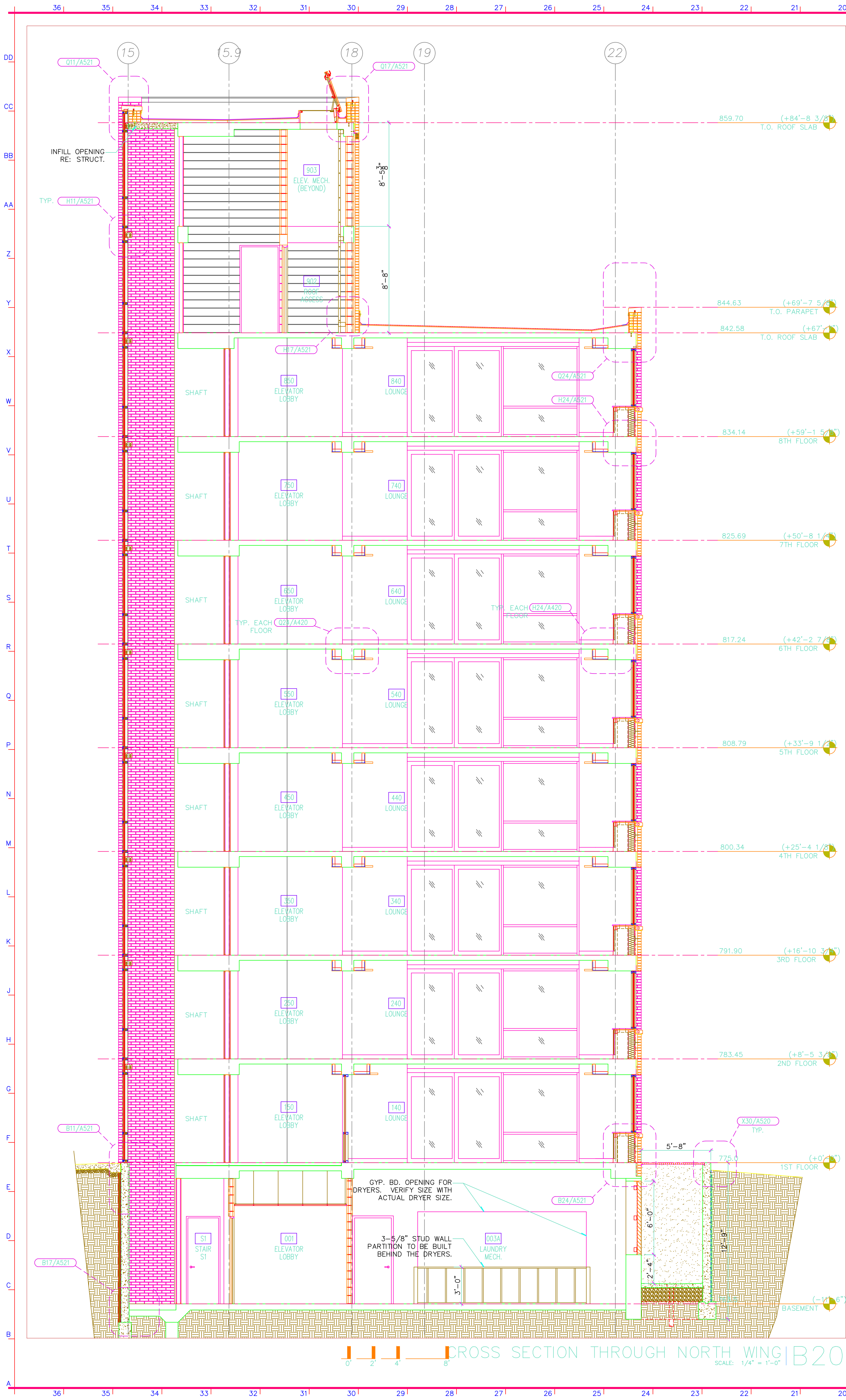
DESIGNED BY AS, DO, JE  
 DRAWN BY AS, DO, JE  
 CHECKED BY MA  
 APPROVED BY MA

NO.	REVISION	SUBMISSION	DATE
0	SUBMITTED FOR BID		01.16.06
1	ADDENDUM #1		02.02.06
2	ADDENDUM #2		02.09.06
3	RECORD DRAWINGS		04.28.08

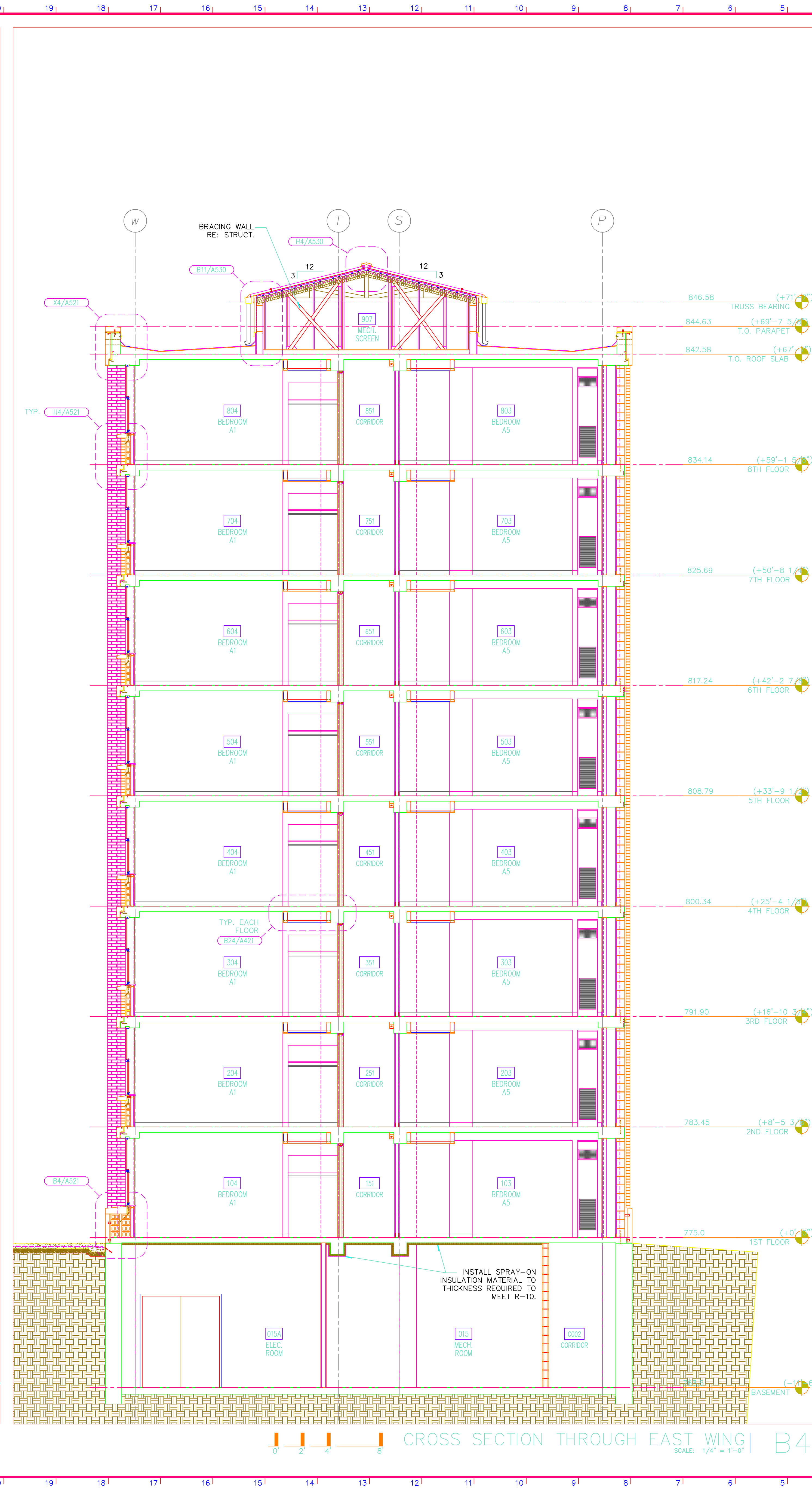
SECTION DETAILS

A521





CROSS SECTION THROUGH NORTH WING | B20  
SCALE: 1/4" = 1'-0"



CROSS SECTION THROUGH EAST WING | B4 KEYNOTES | B1  
SCALE: 1/4" = 1'-0"

- EXISTING CONSTRUCTION (0000)**
- DIVISION 02 - SITE WORK
    - 0215.A EXISTING CONC. PAVERS
    - 0215.B EXISTING CONC. WALKWAY
    - 0271.C EXISTING CONC. DRIVE
    - 0275.C EXISTING CONC. CURB AND GUTTER
    - 02870.B EXISTING VENT WELL GRATE, CLEAN & PAINT
  - DIVISION 03 - CONCRETE
    - 03300.A EXISTING CIP CONCRETE
    - 03300.B EXISTING BRICK MASONRY
    - 04100.A MORTAR
    - 04200.A EXISTING FACE BRICK
    - 04200.B EXISTING GLAZED TILE UNIT
    - 04400.A EXISTING CAST STONE COPING
    - 04400.B EXISTING CAST STONE GULL
    - 04400.C EXISTING STONE PANEL
  - DIVISION 05 - METALS
    - 05120.A EXISTING SHELF ANGLE
    - 05120.B EXISTING LIGHT FIXTURE
  - DIVISION 06 - ELECTRICAL
    - 06200.A EXISTING LIGHT FIXTURE
  - NEW CONSTRUCTION (0000)**
  - DIVISION 02 - SITE WORK
    - 02300.A GRAVEL DRAINAGE FILL
    - 02300.B COMPACTED GRAVEL BASE
    - 02515.A CONC. PAVERS, CONCREDE BLEND
    - 02515.B CONC. PAVES SAND SUB-BASE
    - 02515.C PAVES EDGING
    - 02751.A CONCRETE FINING
    - 02751.D SMOOTH DOWEL
    - 02784.A EXPANSION FILLER
    - 02831.A ALUMINUM PANEL
    - 02831.B PERFORATED ALUM. PANEL
    - 02831.C METAL ENTRY GATE
    - 02870.B VENT WELL GRATE
    - 02870.C LITTER RECEPTACLE
    - 02870.D ASH URN
  - DIVISION 03 - CONCRETE
    - 03300.A CIP CONCRETE (REF. STRUCT.)
    - 03300.B CIP CONCRETE (REF. STRUCT.)
    - 03350.A CEMENTITIOUS FLOOR PATCHING
    - 04100.A MORTAR
    - 04150.A METAL TIE
    - 04150.B MORTAR STOP
    - 04150.C MASONRY WEEP
    - 04150.D TRIMMABLE BAR
    - 04200.A FACE BRICK
    - 04200.B 8" CONCRETE MASONRY UNIT
    - 04400.A CAST STONE TRIM
    - 04400.B CAST STONE MASONRY UNIT
    - 04400.C CAST STONE COPING
    - 04400.D CAST STONE COPING
  - DIVISION 05 - METALS
    - 05100.A STL ANGLE (REF. STRUCT.)
    - 05100.B STL BEAM (REF. STRUCT.)
    - 05100.C STL TUBE (REF. STRUCT.)
    - 05120.B STL C-CHANNEL (REF.)
    - 05120.C STRUBUG PLATE (REF.)
    - 05120.D STRUBUG (REF. STRUCT.)
    - 05210.A L.T. GAL. STL. STUD (REF. STRUCT.)
    - 05210.B L.T. GAL. STL. STUD (REF. STRUCT.)
    - 05400.A L.T. GAL. STL. TRUSS/RAFTER (REF. STRUCT.)
    - 05400.C L.T. GAL. STL. TRUSS/RAFTER (REF. STRUCT.)
    - 05500.A 1/2" GALV. STL. BOLLARD W/ LEAN CONC. FILL
    - 05720.A BEEMER QUADRAL
    - 05720.B 1-1/2" DIA. S.S. PIPE HANDRAIL
    - 05720.C S.S. HANDRAIL BRACKET
    - 05720.D INTERIOR HANDRAIL
  - DIVISION 06 - WOOD & PLASTICS
    - 06100.A TREATED WOOD BLOORING
    - 06100.B 3/4" TREATED PLYWOOD
    - 06100.C WOOD SHIMMING
    - 06100.D 5/8" BENGOLAS
    - 06105.A EXTERIOR GRADE PLYWOOD
    - 06105.B SOLID SURFACE
    - 06400.B PLASTIC LAMINATE
    - 06400.C 3/4" PLYWOOD
    - 06400.D SOLID WOOD
    - 06400.E VENEERED PLYWOOD
    - 06400.F SOLID WOOD
    - 06400.G WOOD BASE
    - 06600.A SOLID POLYMER PANEL
  - DIVISION 07 - THERMAL & MOISTURE PROTECTION
    - 07100.A FLUID APPLIED WATERPROOFING
    - 07100.B 1" PROTECTION BOARD
    - 07200.A RIGID INSULATION
    - 07200.B SOUND ATTENUATING BATT INSULATION
    - 07200.C THERMAL BATT INSULATION
    - 07200.D VAPOR BARRIER
    - 07200.E AIR MITIGATION BARRIER
    - 07200.F EXPANDED POLYSTYRENE INSULATION
    - 07200.G PREFINISHED METAL WALL PANEL
    - 07410.B PREFINISHED METAL ROOF PANEL
    - 07410.C PREFINISHED METAL ROOF PANEL
    - 07410.D PREFINISHED METAL RIDGE VENT
    - 07410.E 1/2" MEDUPLY BOARD
    - 07535.A MODIFIED BITUMINOUS BUILT-UP ROOFING FELT, 30'
    - 07535.B WALKING PAD
    - 07535.C MASTIC TAPE
    - 07620.A PREFINISHED METAL CORNER
    - 07620.B PREFINISHED METAL DRP-EDGE
    - 07620.C PREFINISHED METAL FLASHING
    - 07620.D PREFINISHED METAL FASDA
    - 07620.E PREFINISHED METAL TRIM
    - 07620.F COPPER MTL. FLASHING
    - 07620.G PREFINISHED ALUM. DOWNSPOUT
    - 07620.H COPPER FABRIC FLASHING
    - 07620.I CONTINUOUS GLEAT
    - 07620.K GALV. PITCH PAN
    - 07720.A ACCESS LADDER
    - 07720.B VENT FLASHING COLLAR
    - 07720.C THROUGH WALL SCUPPER
    - 07841.A FIRESTOPPING FILL MATERIAL
    - 07841.B FIRESTOPPING GULL
    - 07900.A EXPANSION FILLER
    - 07920.A FOAM BACKER ROD
    - 07920.B CALK/ SEALANT
    - 07920.C COMPRESSIBLE JOINT
    - 07920.D 3" MIN. POURABLE SEALANT
    - 07920.E \*MODIFIED BY SECTION 0450
  - DIVISION 08 - DOORS & WINDOWS
    - 08111.A METAL DOOR
    - 08111.B HOLLOW METAL DOOR FRAME
    - 08211.A FLUSH WOOD DOOR
    - 08300.A CONER GUARD
    - 08311.A ACCESS DOOR
    - 08411.B PREFINISHED ALUM. DOOR FRAME
    - 08411.C PREFINISHED ALUM. STOREFRONT
    - 08421.A PREFINISHED DOOR OPERATOR
    - 08520.A PREFINISHED ALUM. WINDOW
    - 08511.B REMOVABLE MULLION
    - 08711.B KEY CABINET
    - 08711.C THRESHOLD
    - 08800.A 1" INSULATED GLASS (EXTERIOR)
    - 08800.B 1/4" TEMPERED GLASS (INTERIOR)
    - 08800.C 1" INSL. GLASS SPANDREL
    - 08800.D (P)WARMTEMPERED GLASS (EXTERIOR)
    - 08800.E 1/2" TEMPERED GLASS (EXTERIOR)
    - 08800.F GLAZING SICE MOLDING
    - 08800.G TRANSLUCENT SOLID POLYMER
    - 08830.A MIRROR
    - 08830.B GLAZED CURTAIN WALL SYSTEM
    - 08950.A SKYLIGHT
  - DIVISION 09 - FINISHES
    - 09250.A 5/8" GYPSUM BOARD (TYPE "X")
    - 09250.B 7/8" METAL FURRING CHANNEL
    - 09250.C 5/8" EXTERIOR GYP. SHEATHING BOARD
    - 09250.D 5/8" IMPACT RESISTANT GYP. BOARD
    - 09250.E 5/8" WATER RESISTANT GYP. BOARD
    - 09250.F PREFINISHED ALUM. J-MOLDING
    - 09250.G 1-1/2" METAL FURRING CHANNEL
    - 09250.H 1/2" GYPSUM BOARD (TYPE "X")
    - 09250.I SUSPENDED GYPSUM BOARD
    - 09250.J 5/8" GYPSUM BOARD
    - 09250.K 2-1/2" L.T. GA. STL. STUD
    - 09250.L 3-1/2" L.T. GA. STL. STUD
    - 09250.M 8" X 8" L.T. GA. STL. STUD
    - 09250.N 4" L.T. GA. STL. STUD
    - 09250.O 2-FURRING CHANNEL
    - 09250.P 2-1/2" C.H. SHAFT WALL STUD
    - 09250.Q 1" GYPSUM LINER BOARD
    - 09250.R 1/2" GYPSUM BOARD (TYPE "X")
    - 09300.B PORCELAIN TILE (PT)
    - 09300.C WATERPROOFING MEMBRANE
    - 09300.D 6" X 8" QUARRY TILE (QT)
    - 09300.E METAL TRANSITION STRIP
    - 09300.F CEMENTITIOUS BACKER BOARD
    - 09510.A 2" X 2" SUSPENDED ACOUSTIC G.L.G. TILE (ACT)
    - 09510.B PREFINISHED ALUMINUM EDGE CAP
    - 09510.C SUSPENDED WOOD CEILING
    - 09510.D WOOD DRILL CEILING
    - 09510.E RUBBER BASE (RB)
    - 09510.F VINYL COMPOSITION TILE (VCT)
    - 09510.G VINYL SHEET FLOORING (VSP)
    - 09510.H CARPET TILE (PT)
    - 09510.I RESILIENT MILLWORK BASE (MB)
    - 09510.J CARPET (CT)
    - 09680.B TRANSITION STRIP
    - 09900.A PAINT
    - 09900.B STAIN
  - DIVISION 10 - SPECIALTIES
    - 1015.A BALLER BOARD
    - 1015.A TOILET PARTITIONS
    - 10430.A BUILDING SIGNAGE
    - 10520.A FIRE EXTINGUISHER CABINET
    - 10550.A MAILBOXES
    - 10800.A TOILET AND BATH ACCESSORIES
    - 10800.B WARDROBE RAIL AND SUPPORT
  - DIVISION 15 - MECHANICAL & PLUMBING
    - 11450.A APPLIANCES
    - 15420.A DRAIN/WASTE/VENT PIPE (REF. PLUMBING)
    - 15430.A ROOF DRAIN (REF. PLUMBING)
    - 15430.B WALL HYDRANT (REF.)
    - 15430.C FLOOR SINK (REF. PLUMBING)
    - 15430.D PLUMBING (REF. PLUMBING)
    - 15440.A FLOOR SINK (REF. PLUMBING)
    - 15820.A PRE-FABRICATED EQUIPMENT CURB (REF. M)
    - 15820.B PRE-FABRICATED EQUIPMENT CURB (REF. M)
  - DIVISION 16 - ELECTRICAL
    - 16511.A LIGHT FIXTURE (REF. ELECTRICAL)

INTERNATIONAL ARCHITECTS ATELIER  
912 BROADWAY SUITE 300, K.C., MO. 64105  
PH: 816.471.6522 FX: 816.471.3755

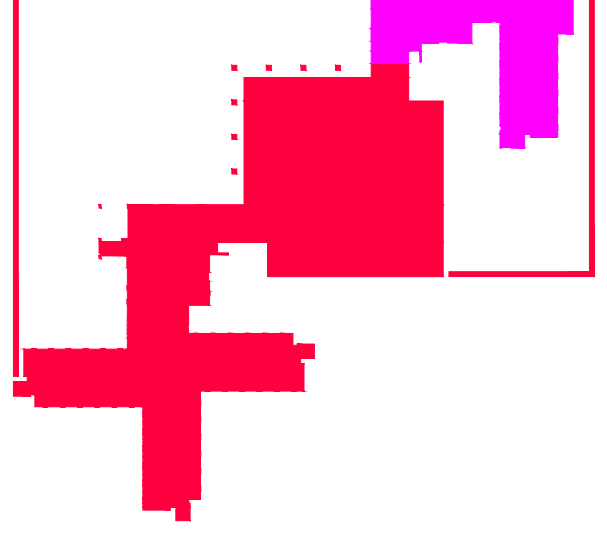


MEP CONSULTANT  
W.L. CASSELL & ASSOCIATES, INC.  
106 WEST 11TH STREET, SUITE 1400  
KANSAS CITY, MO. 64108  
PH: 816.842.8437  
FX: 816.842.6441

STRUCTURAL CONSULTANT  
STRUCTURAL ENGINEERING ASSOCIATES  
1000 WALNUT, SUITE 1570  
KANSAS CITY, MO. 64112  
PH: 816.421.1042  
FX: 816.421.1061

CODE CONSULTANT  
FP & C CONSULTANTS, INC.  
ONE WARD PARKWAY, SUITE 200  
KANSAS CITY, MO. 64112  
PH: 816.931.3377  
FX: 816.931.3378

SCHURZ HALL  
RENOVATE RESIDENCE HALL  
+  
BINGHAM HALL  
MODIFICATIONS



PROJECT NO. CP061151

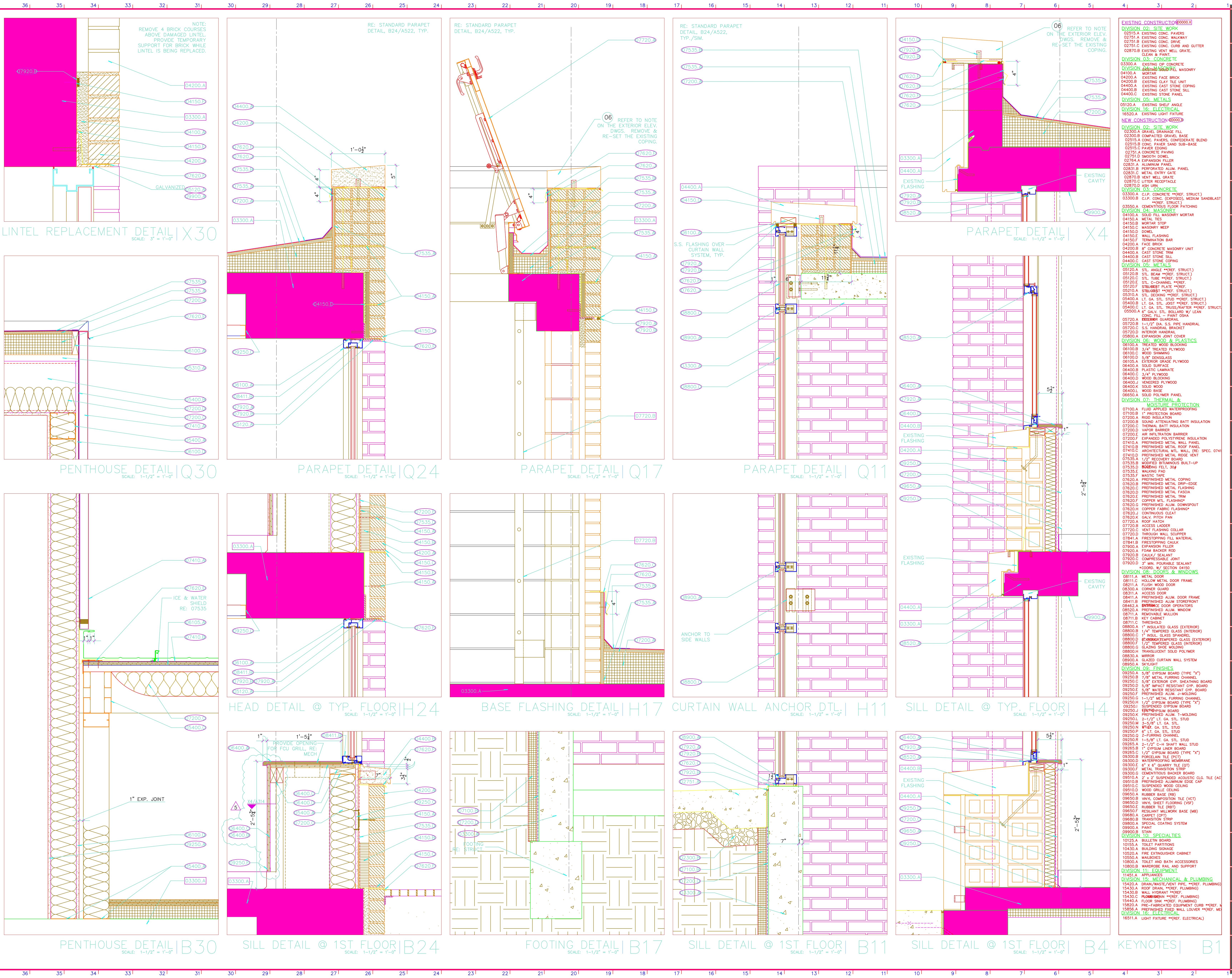
DATE: June 11, 2008  
PROJ. NO.: CP061151

DESIGNED BY: AS, DO  
DRAWN BY: AS, DO  
CHECKED BY: MA  
APPROVED BY: MA

NO.	REVISION	SUBMISSION	DATE
0	ISSUED FOR BID		12.04.06
1	ADDENDUM #1		12.15.06
2	ADDENDUM #2		12.28.06
3	ADDENDUM #3		01.04.07
4	ADDENDUM #4		01.05.07
5	RECORD DRAWINGS		06.11.08

BUILDING SECTIONS

A320



**INTERNATIONAL ARCHITECTS ATELIER**

912 BROADWAY SUITE 300, K.C., MO. 64105  
PH: 816.471.6522 FX: 816.471.3755

**M U**

**MEP CONSULTANT**

W.L. CASSELL & ASSOCIATES, INC.  
106 WEST 11TH STREET, SUITE 1400  
KANSAS CITY, MO. 64108  
PH: 816.842.8437 FX: 816.842.6441

**STRUCTURAL CONSULTANT**

STRUCTURAL ENGINEERING ASSOCIATES  
1000 WALNUT, SUITE 1570  
KANSAS CITY, MO. 64108  
PH: 816.421.1042 FX: 816.421.1061

**CODE CONSULTANT**

FP & C CONSULTANTS, INC.  
ONE WARD PARKWAY, SUITE 200  
KANSAS CITY, MO. 64112  
PH: 816.931.3377 FX: 816.931.3378

**SCHURZ HALL RENOVATE RESIDENCE HALL + BINGHAM HALL MODIFICATIONS**

**PROJECT NO. CP061151**

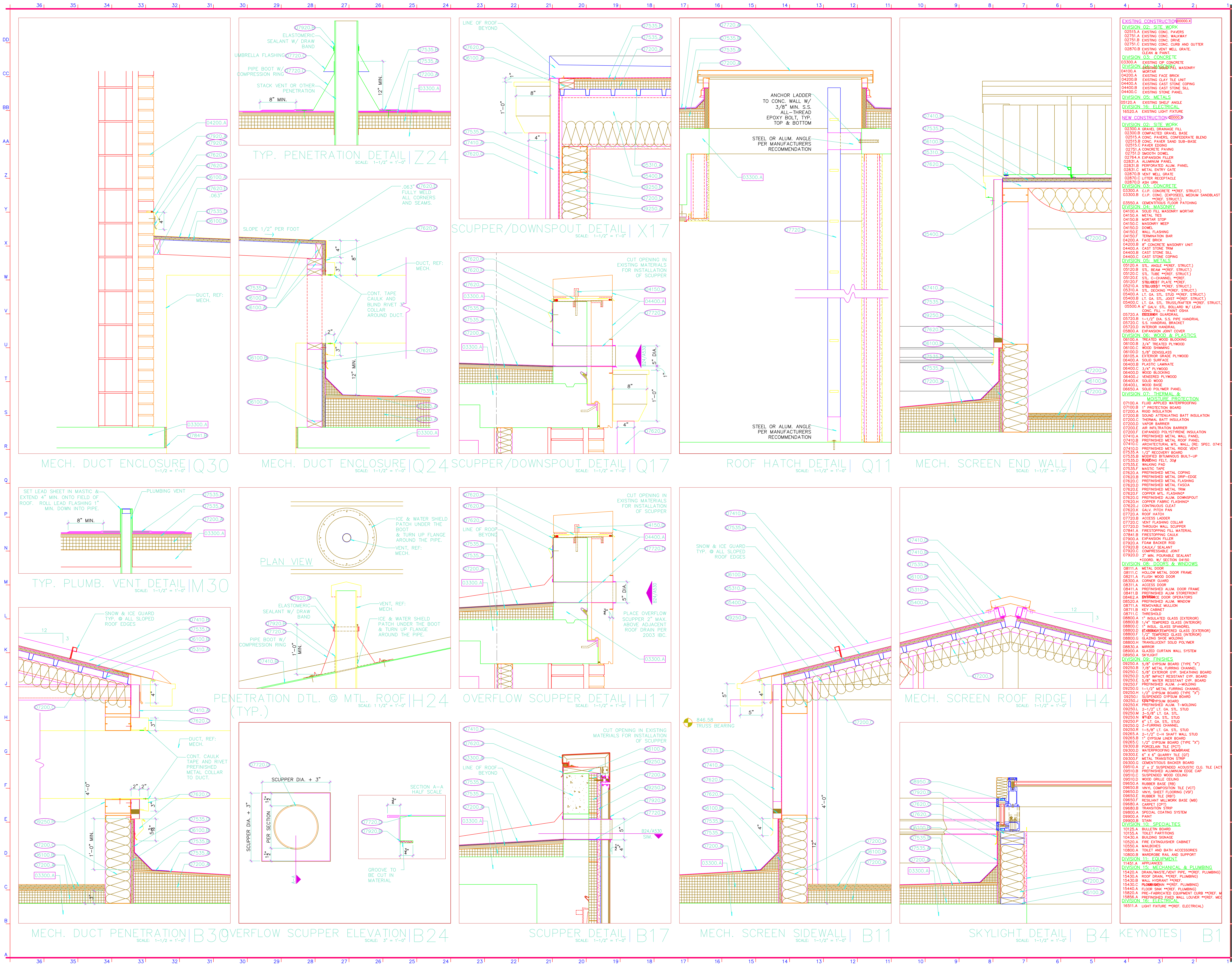
**DATE:** June 11, 2008  
**PROJ. NO.:** CP061151

**DESIGNED BY:** AS, DO  
**DRAWN BY:** AS, DO  
**CHECKED BY:** MA  
**APPROVED BY:** MA

NO.	REVISION	SUBMISSION	DATE
0	ISSUED FOR BID		12.04.06
1	ADDENDUM #1		12.15.06
2	ADDENDUM #2		12.28.06
3	ADDENDUM #3		01.04.07
4	ADDENDUM #4		01.05.07
5	RECORD DRAWINGS		06.11.08

**SECTION DETAILS**

**A521**



- EXISTING CONSTRUCTION**
- 0251A EXISTING CONC PAVERS
  - 0275A EXISTING CONC WALKWAY
  - 0275B EXISTING CONC DRIVE
  - 0275C EXISTING CONC CURB AND GUTTER
  - 02870B EXISTING VENT WELL GRATE, CLEAN & PAINT
- DIVISION 03 - CONCRETE**
- 03300.A EXISTING ZIP CONCRETE
  - 04100.A EXISTING FACE BRICK
  - 04200.B EXISTING CLAY TILE UNIT
  - 04400.B EXISTING CAST STONE COPING
  - 04400.C EXISTING STONE PANEL
  - 05120.A EXISTING SHELF ANGLE
  - 16200.A EXISTING LIGHT FIXTURE
- NEW CONSTRUCTION**
- DIVISION 02 - SITE WORK**
- 02300.A GRAVEL DRAINAGE FILL
  - 02300.B COMPACTED GRAVEL BASE
  - 02315.A CONC. PAVERS, CONCRETE BLEND
  - 02315.B CONC. PAVER SAND SUB-BASE
  - 0275A CONCRETE PAVING
  - 02751.D SMOOTH DOWEL
  - 02764.A EXPANSION FILLER
  - 02831.A ALUMINUM PANEL
  - 02831.B PERFORATED ALUM. PANEL
  - 02831.C METAL ENTRY GATE
  - 02870.B VENT WELL GRATE
  - 02870.C LITTER RECEPTACLE
  - 02870.D PIP. W/IN.
- DIVISION 03 - CONCRETE**
- 03300.A CLIP CONCRETE \*\*REF. STRUCT.
  - 03300.B CLIP. CONC. (EXPOSED), MEDIUM SAND/BLAST
  - 03350.A CEMENTITIOUS FLOOR PATCHING
  - 04100.A SOLID FILL MASONRY MORTAR
  - 04150.A METAL TIE
  - 04150.B MORTAR STOP
  - 04150.C MASONRY WEEP
  - 04150.D TERMINATOR BAR
  - 04200.A FACE BRICK
  - 04400.A CAST STONE TRIM
  - 04400.B CAST STONE SILL
  - 04400.C CAST STONE COPING
- DIVISION 04 - MASONRY**
- 04150.A METAL TIE
  - 04150.B MORTAR STOP
  - 04150.C MASONRY WEEP
  - 04150.D TERMINATOR BAR
  - 04200.A FACE BRICK
  - 04400.A CAST STONE TRIM
  - 04400.B CAST STONE SILL
  - 04400.C CAST STONE COPING
- DIVISION 05 - METALS**
- 05120.A STL. ANGLE \*\*REF. STRUCT.
  - 05120.B STL. BEAM \*\*REF. STRUCT.
  - 05120.C STL. TUBE \*\*REF. STRUCT.
  - 05120.D STL. C-CHANNEL \*\*REF.
  - 05120.E STRU. PLATE \*\*REF.
  - 05210.A STUBOUTS \*\*REF. STRUCT.
  - 05210.B STL. SCANG \*\*REF. STRUCT.
  - 05400.A LT. GA. STL. STUD \*\*REF. STRUCT.
  - 05400.B LT. GA. STL. TRUSS/RAFTER \*\*REF. STRUCT.
  - 05500.A 2" GALV. STEEL W/ LEAN CONC. FILL - PAINT GSH
  - 05520.A BRICKER SQUARE
  - 05720.B 1-1/2" DIA. S.S. PIPE HANDRAIL
  - 05720.C S.S. HANDRAIL BRACKET
  - 05720.D INTERIOR HANDRAIL
  - 05800.A EXPANSION JOINT COVER
- DIVISION 06 - WOOD & GLASTICS**
- 06100.A TREATED WOOD BLOCKING
  - 06100.B 3/4" TREATED PLYWOOD
  - 06100.C WOOD SHIMMING
  - 06100.D 5/8" SURFACE
  - 06100.E EXTERIOR GRADE PLYWOOD
  - 06400.A SOLID SURFACE
  - 06400.B PLASTIC LAMINATE
  - 06400.C 3/4" PLYWOOD
  - 06400.D WOOD BLOCKING
  - 06400.E VENEERED PLYWOOD
  - 06400.F SOLID WOOD
  - 06400.G WOOD BASE
  - 06400.H SOLID POLYMER PANEL
- DIVISION 07 - THERMAL & MOISTURE PROTECTION**
- 07100.A FLUID APPLIED WATERPROOFING
  - 07100.B 1" PROTECTION BOARD
  - 07200.B SOUND ATTENUATING BATT INSULATION
  - 07200.C RIGID BATT INSULATION
  - 07200.D VAPOR BARRIER
  - 07200.E AIR MITIGATION BARRIER
  - 07200.F EXPANDED POLYSTYRENE INSULATION
  - 07410.A PREFINISHED METAL WALL PANEL
  - 07410.B PREFINISHED METAL ROOF PANEL
  - 07410.C ARCHITECTURAL MET. WALL (REC. SPEC. 0741)
  - 07410.D PREFINISHED METAL RIDGE VENT
  - 07535.A 1/2" RECOVERY BOARD
  - 07535.B MODIFIED BITUMINOUS BUILT-UP
  - 07535.C WALKING PAD
  - 07535.D WALKING PAD
  - 07620.A PREFINISHED METAL COPING
  - 07620.B PREFINISHED METAL Drip-EDGE
  - 07620.C PREFINISHED METAL FLASHING
  - 07620.D PREFINISHED METAL FASCIA
  - 07620.E PREFINISHED METAL TRIM
  - 07620.F COPPER MET. FLASHING
  - 07620.G PREFINISHED ALUM. DOWNSPOUT
  - 07620.H COPPER FABRIC FLASHING
  - 07620.I CONTINUOUS GLEAT
  - 07620.J GALV. PITCH PAN
  - 07720.A ROOF HATCH
  - 07720.B ACCESS LADDER
  - 07720.C VENT FLASHING COLLAR
  - 07720.D THROUGH WALL SCUPPER
  - 07841.A FIRESTOPPING COLLAR
  - 07841.B FIRESTOPPING GASKET
  - 07900.A EXPANSION FILLER
  - 07900.B FOAM BACKER ROOF
  - 07920.A CALK/ SEALANT
  - 07920.B COMPRESSIBLE JOINT
  - 07920.C 3" MIN. POURABLE SEALANT
  - 07920.D \*\*COORD. W/ STRUCT. DIVISION
- DIVISION 08 - DOORS & WINDOWS**
- 0811.A METAL DOOR
  - 08111.C HOLLOW METAL DOOR FRAME
  - 08111.D FLUSH WOOD DOOR
  - 08300.A CORNER GUARD
  - 08311.A ACCESS DOOR
  - 08411.B PREFINISHED ALUM. DOOR FRAME
  - 08421.A ALUM. DOOR OPERATOR
  - 08520.A PREFINISHED ALUM. WINDOW
  - 08711.A REMOVABLE MULLION
  - 08711.B KEY CABINET
  - 08711.C THRESHOLD
  - 08800.A 1" INSULATED GLASS (EXTERIOR)
  - 08800.B 1/4" THERMED GLASS (INTERIOR)
  - 08800.C 1" INSUL. GLASS SPANDREL
  - 08800.D FIBERGLASS/TEMPERED GLASS (EXTERIOR)
  - 08800.E 1/2" THERMED GLASS (INTERIOR)
  - 08800.F GLASS/TEMPERED GLASS (INTERIOR)
  - 08800.G GLASS/TEMPERED GLASS (INTERIOR)
  - 08800.H TRANSPARENT SOLID POLYMER
  - 08830.A MIRROR
  - 08830.B GLAZED CURTAIN WALL SYSTEM
  - 08950.A SKYLIGHT
- DIVISION 09 - FINISHES**
- 09250.A 5/8" GYPSUM BOARD (TYPE "X")
  - 09250.B 7/8" METAL FURRING CHANNEL
  - 09250.C 5/8" EXTERIOR GYP. SHEATHING BOARD
  - 09250.D 5/8" IMPACT RESISTANT GYP. BOARD
  - 09250.E 5/8" WATER RESISTANT GYP. BOARD
  - 09250.F PREFINISHED ALUM. SHEATHING
  - 09250.G 1-1/2" METAL FURRING CHANNEL
  - 09250.H 1/2" GYPSUM BOARD (TYPE "X")
  - 09250.I PREFINISHED ALUM. BOARD
  - 09250.J GYPSUM BOARD
  - 09250.K 2-1/2" LT. GA. STL. STUD
  - 09250.L 1-1/2" LT. GA. STL. STUD
  - 09250.M 1-1/2" LT. GA. STL. STUD
  - 09250.N 1-1/2" LT. GA. STL. STUD
  - 09250.O 2-FURRING CHANNEL
  - 09250.P 1-1/2" LT. GA. STL. STUD
  - 09250.Q 2-FURRING CHANNEL
  - 09250.R 1-1/2" LT. GA. STL. STUD
  - 09250.S 1" GYPSUM UNDER BOARD
  - 09250.T 1/2" GYPSUM BOARD (TYPE "X")
  - 09300.B PORCELAIN TILE (PT)
  - 09300.C WATERPROOFING MEMBRANE
  - 09300.D 6" X 8" QUARRY TILE (QT)
  - 09300.E METAL TRANSITION STRIP
  - 09300.F CEMENTITIOUS BACKER BOARD
  - 09510.A 2" X 2" SUPPLEMENTAL ACQUATIC G.L.G. TILE (ACT)
  - 09510.B PREFINISHED ALUMINUM EDGE CAP
  - 09510.C SUPPLEMENTED WOOD CEILING
  - 09510.D WOOD DRILLE CEILING
  - 09510.E BARRIER BASE (BB)
  - 09510.F WYL. COMPOSITION TILE (VCT)
  - 09510.G VINYL SHEET FLOORING (VSP)
  - 09510.H RUBBER TILE (RT)
  - 09510.I RESILIENT MILLWORK BASE (MB)
  - 09510.J CARPET
  - 09510.K TRANSITION STRIP
  - 09510.L SPECIAL COATING SYSTEM
  - 09900.A PAINT
  - 09900.B STAIN
- DIVISION 10 - SPECIALTIES**
- 10125.A BULLETPROOF BOARD
  - 10155.A TOILET PARTITIONS
  - 10550.A BUILDING SIGNAGE
  - 10520.A FIRE EXTINGUISHER CABINET
  - 10550.A WALLHOOKS
  - 10800.A TOILET AND BATH ACCESSORIES
  - 10800.B WARDROBE RAIL AND SUPPORT
- DIVISION 11 - EQUIPMENT**
- 11451.A APRON
- DIVISION 12 - MECHANICAL & PLUMBING**
- 15420.A DRAIN/WASTE/VENT PIPE, \*\*REF. PLUMBING
  - 15430.A ROOF DRAIN, \*\*REF. PLUMBING
  - 15430.B WALL HYDRANT \*\*REF.
  - 15430.C PLUMBING \*\*REF. PLUMBING
  - 15440.A FLOOR SINK \*\*REF. PLUMBING
  - 15820.A PRE-FABRICATED EQUIPMENT CURB \*\*REF. M
  - 15820.B PRE-FABRICATED EQUIPMENT CURB \*\*REF. M
- DIVISION 16 - ELECTRICAL**
- 16211.A LIGHT FIXTURE \*\*REF. ELECTRICAL

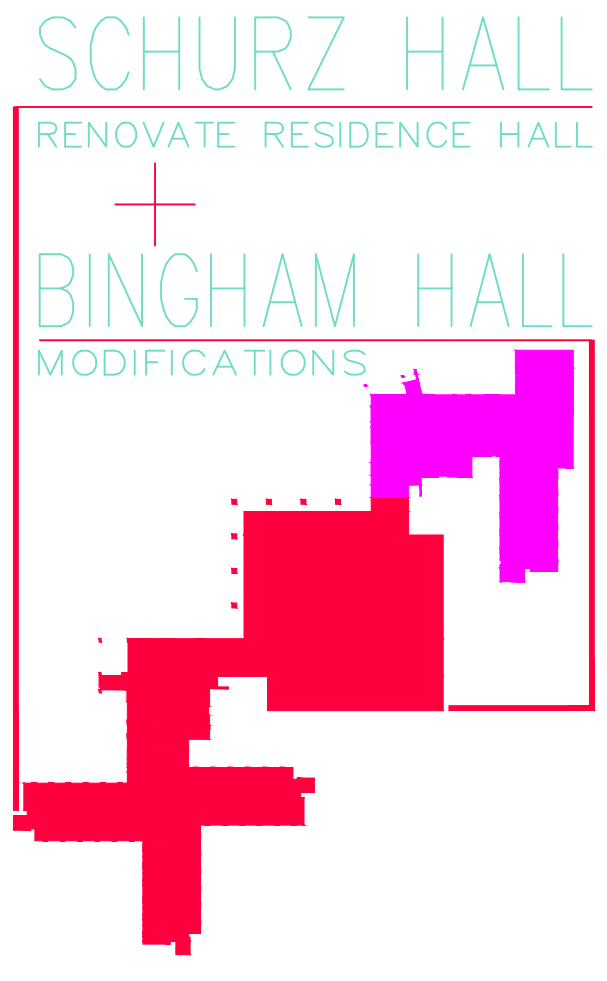
**INTERNATIONAL ARCHITECTS ATELIER**  
 912 BROADWAY SUITE 300, K.C., MO. 64105  
 PH: 816.471.6522 FX: 816.471.3755



**MEP CONSULTANT**  
**W.L. CASSELL & ASSOCIATES, INC.**  
 106 WEST 11TH STREET, SUITE 1400  
 KANSAS CITY, MO. 64108  
 PH. 816.842.8437  
 FX. 816.842.6441

**STRUCTURAL CONSULTANT**  
**STRUCTURAL ENGINEERING ASSOCIATES**  
 1000 WALNUT, SUITE 1570  
 KANSAS CITY, MO. 64108  
 PH. 816.421.1042  
 FX. 816.421.1061

**CODE CONSULTANT**  
**FP & C CONSULTANTS, INC.**  
 ONE WARD PARKWAY, SUITE 200  
 KANSAS CITY, MO. 64112  
 PH. 816.931.3377  
 FX. 816.931.3378



PROJECT NO. CP061151

DATE: June 11, 2008  
 PROJ. NO.: CP061151

DESIGNED BY: AS, DO  
 DRAWN BY: AS, DO  
 CHECKED BY: MA  
 APPROVED BY: MA

NO.	REVISION	SUBMISSION	DATE
0	ISSUED FOR BID		12.04.06
1	ADDENDUM #1		12.15.06
2	ADDENDUM #2		12.28.06
3	ADDENDUM #3		01.04.07
4	ADDENDUM #4		01.05.07
5	RECORD DRAWINGS		06.11.08

ROOF DETAILS

A530